

# DIREKTRONIK

<b>Item</b>	<b>Fiber Media Converter</b>
<b>Model NO.</b>	<b>133-4740, 133-4741</b>
<b>Description</b>	1 Port 100Base-FX to 2 Ports 10/100Base-TX



## Overview

133-4740/133-4741 2-UTP port media converter series, with one 100FX SM/MM port and two UTP 10/100Base-TX port, external type media converter support USB powered

## Features

- 10/100Mbps auto-sensed, facilitating network upgrade
- Support 19' 2U Chassis System
- Built-in efficient switching core to implement flow control and reduce broadcast packets
- Providing two 10M/100Mbps twisted pair switching ports to implement the backup of electrical ports and the access of multiple users
- Supporting full-duplex and half-duplex and its auto-sensed, Auto MDI/MDIX
- Supporting the transmission of packets up to 1518 bytes
- Supporting Quality of Service (QoS) and ensuring the transmission of VoIP packets

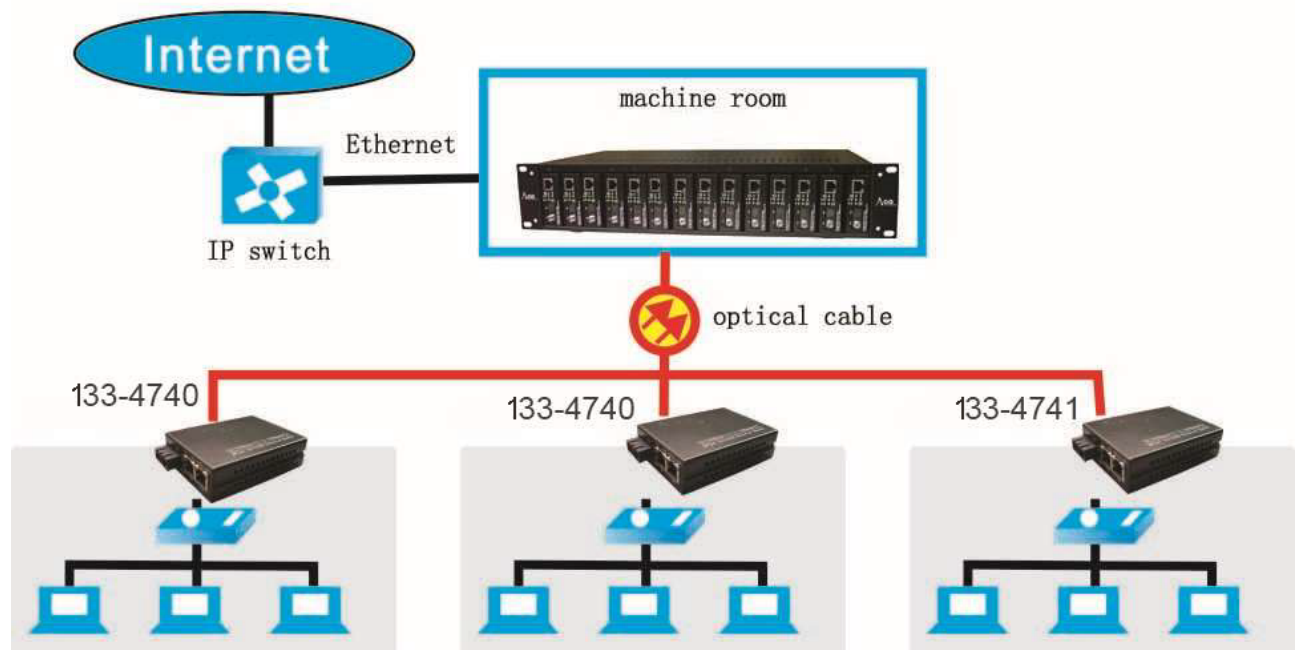
# DIREKTRONIK

- Supporting STP to form a redundant network
- Low power consumption, low heat, reliable and stable performance, and long lifetime
- VLAN function optional as requirement.

## Application

10/100Mbps fast optical Ethernet long-distance transmitting network

## media converter solution

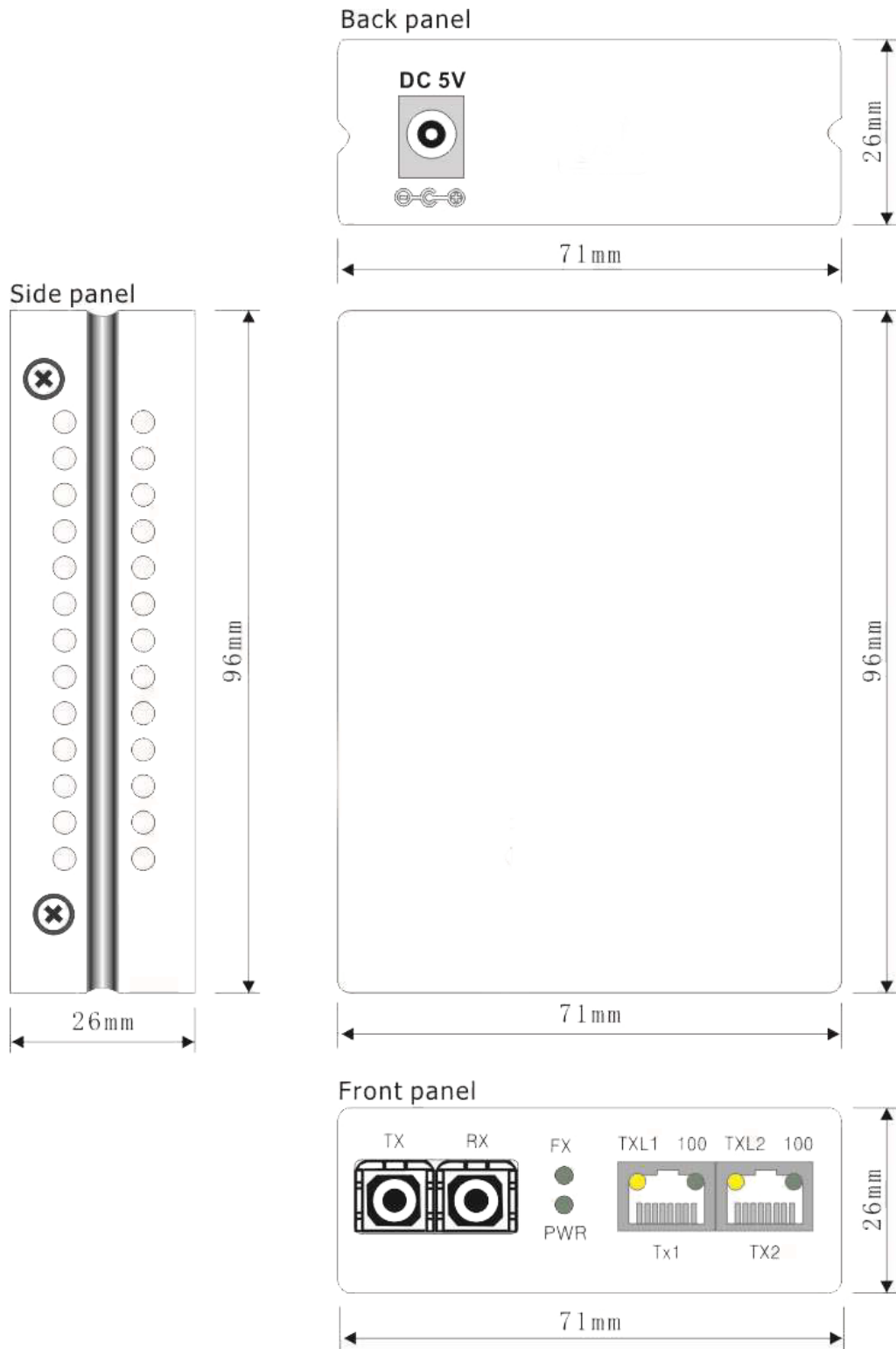




### Technical Indexes

Parameter	Specifications
Access mode	10/100Mbps
Standard	IEEE802.3 10Base-T Ethernet, IEEE802.3u, 100Base-TX/FX Fast Ethernet, IEEE802.3x Flow control, IEEE802.1q VLAN, IEEE802.1p QoS, IEEE802.1d Spanning Tree
Wavelength	850nm/1310nm/1550nm
Transmission distance	multi-mode: 2 km; single-mode: 20~120km; Category-5 twisted pairs: 100m
Port	Two RJ45 ports: Connecting with STP/UTP category-5 twisted pairs One optical port: MM: SC/ST (50, 62.5/125µm); SM: SC/FC (9/125µm)
Conversion means	Media conversion, store-and-forward
MAC address table	1 K
Buffer space	1Mbit
Flow control	Full duplex: flow control; half duplex: back pressure
Delay	9.6us
Error rate	<10 <sup>-9</sup>
MTBF	100,000 hours
LED indicator	PWR (power supply); FX LINK/ACT (optical link/action) FX SPD (fiber 100M transmission rate) TP1/2 LINK/ACT (1/2 port twisted pair link action) TP1/2 SPD (1/2 port twisted pair 100M transmission rate)
Power supply	DC5V 1A (external)
Power consumption	3.5W
Operating temperature	-10~55 °C
Operating humidity	5%~90%
Maintaining temperature	-40~70 °C
Maintaining humidity	5% ~ 90% non-condensing
Dimensions	External: 94mm*71mm*26

## Mechanical Dimensions (external Power supply)



# DIREKTRONIK

## Order Information

Model No.	Wavelength	FX Port	2-TX Port	Fiber model	Distance
TBD	850/1310nm	SC/ST/FC	RJ-45	MM, Dual-fiber	2km
133-4740	1310nm FP	SC	RJ-45	SM, Dual -fiber	20km
TBD	1310nm FP	SC/ST/FC	RJ-45	SM, Dual-fiber	40km
TBD	1310nm FP	SC/ST/FC	RJ-45	SM, Dual-fiber	60km
TBD	1550nm DFB	SC/ST/FC	RJ-45	SM, Dual-fiber	80km
TBD	1550nm DFB	SC/ST/FC	RJ-45	SM, Dual-fiber	100km
TBD	TX1310/RX1550nm FP	SC/ST/FC	RJ-45	SM, Single-fiber	20km
TBD	RX1310/RX1550nm FP	SC/ST/FC	RJ-45	SM, Single-fiber	20km
TBD	TX1310/RX1550nm FP	SC/ST/FC	RJ-45	SM ,Single-fiber	40km
TBD	RX1310/TX1550nm FP	SC/ST/FC	RJ-45	SM ,Single-fiber	40km
TBD	TX1310/RX1550nm DFB	SC/ST/FC	RJ-45	SM ,Single-fiber	60km
TBD	RX1310/TX1550nm DFB	SC/ST/FC	RJ-45	SM ,Single-fiber	60km
TBD	TX1310/RX1550nm DFB	SC/ST/FC	RJ-45	SM ,Single-fiber	80km
TBD	RX1310/TX1550nm DFB	SC/ST/FC	RJ-45	SM ,Single-fiber	80km
133-4741	1310nm FP	SC	RJ-45	MM, Dual-fiber	2km