

## Product Name

Novanex™ PoE Digital Clock

- 4-digit models
- 6-digit models



## Product Description

### Features

Novanex clocks are specifically designed for facilities that require accurate, highly visible, synchronized time.

Novanex clocks are built on Power over Ethernet (PoE) technology. Time and energy-efficient power are provided by the network through an Ethernet cable making them easy to install and simple to maintain.

Novanex clocks do not require a master clock, electrical outlets or batteries. Clocks may be backed up using a centralized Uninterrupted Power Supply (UPS) to display time in the event of a power failure.

Novanex clocks do not rely on "atomic time signal" for updates, just common access to a network time server.

In environments where the clocks need protection from dust and / or water penetration, a NEMA rated (Class 1,3,3S,4, 4X,6,6P, 12) enclosure is available.

In environments that may be subject to occasional explosive gases, an ATEX rated enclosure is available (IP54, ExII 2 G, Ex e II, Ex II 3D, Ex tD A22EN 60079, EN 61241-01, IK 4J).

### Benefits

- Accuracy (within 200 milliseconds)
- Continual synchronization
- Easy installation, maintenance and management
- Energy efficiency
- Reliability
- Three-year warranty
- Assembled in the USA using locally sourced components when available



## Specifications

Power supplied over standard Cat-5 or Cat-6 cabling using the IEEE 802.3af (POE+ compatible) Power over Ethernet standard

Low power consumption—8 watts (4 digit), 9.5 watts (6 digit)

No master clock or serial connection required

Visible from over 150 feet (46 meters)

4-digit models include 4 inch (10.2 cm) seven-segment, red or green LED numerals

6-digit models include 4 inch (10.2 cm) hour and minute numerals; and 3 inch (7.6 cm) second numerals; numerals are seven-segment, red or green LED

12-or 24-hour time display options

Accuracy within 200 milliseconds

Time set automatically by Simple Network Time Protocol (SNTP)

Automatic adjustment for Daylight Saving Time Compatible with DHCP or static IP addressable 10/100BaseT Ethernet

Notification when clocks disconnected or not synchronized (monitoring system required)

Easy to upload firmware upgrades

Service light status indicator

ANSI/UL 60950-1, CAN/C22.2, ETL Listed, CE Marked,

RoHS compliant

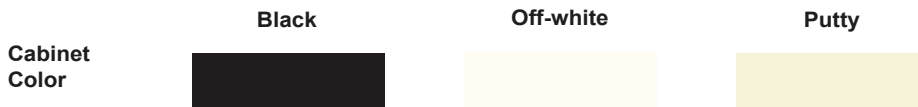
Monitoring system available

**Table 1A—Novanex PoE Clocks, 4 digit models**

Model Number	Mounting	Cabinet Materials	Cabinet Color	LED Color
ONT4BK-P	One clock, surface mounted	ABS injection molded plastic	Black	Red
ONT4PT-P	One clock, surface mounted	ABS injection molded plastic	Putty	Red
ONT4OW-P	One clock, surface mounted	ABS injection molded plastic	Off-white	Red
ONT4BK	One clock, surface mounted	Powder-coated aluminum	Black	Red
ONT4SS	One clock, surface mounted	304 stainless steel	Stainless Steel	Red
ONT4BKFM	One clock, recess mount	ABS plastic case, black aluminum face plate	Black	Red
ONT4BKFMS	One clock, recess mount	ABS plastic case, stainless steel face plate	Black, Stainless	Red
ONT4BK-P-G	One clock, surface mounted	ABS injection molded plastic	Black	Green
ONT4PT-P-G	One clock, surface mounted	ABS injection molded plastic	Putty	Green
ONT4OW-P-G	One clock, surface mounted	ABS injection molded plastic	Off-white	Green
ONT4BK-G	One clock, surface mounted	Powder-coated aluminum	Black	Green
ONT4SS-G	One clock, surface mounted	304 stainless steel	Stainless Steel	Green
ONT4FM-G	One clock, recess mount	ABS plastic case, aluminum face plate	Black	Green
ONT4BKFMS-G	One clock, recess mount	ABS plastic case, stainless steel face plate	Black, Stainless	Green
ONT4DSBK	Two clocks on cantilever wall bracket	Aluminum	Black	Red
ONT4DSBK-G	Two clocks on cantilever wall bracket	Aluminum	Black	Green
ONT4DSBK-P	Two clocks on cantilever wall bracket	Plastic	Black	Red
ONT4DSBK-P-G	Two clocks on cantilever wall bracket	Plastic	Black	Green
ONT4DSOW-P	Two clocks on cantilever wall bracket	Plastic	Off-white	Red
ONT4DSOW-P-G	Two clocks on cantilever wall bracket	Plastic	Off-white	Green
ONT4DSPT-P	Two clocks on cantilever wall bracket	Plastic	Putty	Red
ONT4DSPT-P-G	Two clocks on cantilever wall bracket	Plastic	Putty	Green
ONT4DSSS	Two clocks on cantilever wall bracket	Stainless Steel	Stainless Steel	Red
ONT4DSSS-G	Two clocks on cantilever wall bracket	Stainless Steel	Stainless Steel	Green

**Table 1B—Novanex PoE Clocks, 6 digit models**

ONT6BK	One clock, surface mounted	Powder-coated aluminum	Black	Red
ONT6SS	One clock, surface mounted	304 stainless steel	Stainless Steel	Red
ONT6BKFM	One clock, recess mount	Powder-coated aluminum	Black	Red
ONT6BKFMS	One clock, recess mount	Aluminum case, stainless steel face plate	Black, Stainless	Red
ONT6BK-G	One clock, surface mounted	Powder-coated aluminum	Black	Green
ONT6SS-G	One clock, surface mounted	304 stainless steel	Stainless Steel	Green
ONT6BKFM-G	One clock, recess mount	Powder-coated aluminum	Black	Green
ONT6BKFMS-G	One clock, recess mount	Aluminum case, stainless steel face plate	Black, Stainless	Green
ONT6DSBK	Two clocks on cantilever wall bracket	Aluminum	Black	Red
ONT6DSBK-G	Two clocks on cantilever wall bracket	Aluminum	Black	Green
ONT6DSSS	Two clocks on cantilever wall bracket	Stainless Steel	Stainless Steel	Red
ONT6DSSS-G	Two clocks on cantilever wall bracket	Stainless Steel	Stainless Steel	Green



Model	Description
ONT4KIT	4 Digit pendant mounting kit, for ceiling mounting
ONT4KIT-W	4 Digit clock cantilever mounting kit, for wall mounting
ONT6KIT	6 Digit clock pendant mounting kit, for ceiling mounting
ONT6KIT-W	6 Digit clock cantilever mounting kit, for wall mounting
ONT4NEMA	NEMA enclosure for 4-digit clock
ONT6NEMA	NEMA enclosure for 6-digit clock
722442	Power injector, Ethernet, Phihong
ONT4NEMA C1/DIV2	NEMA enclosure for 4-digit clock
ONT6NEMA C1/DIV2	NEMA enclosure for 6-digit clock

**Table 3—Technical Specifications**

Feature	ONT4 Digital Clocks	ONT6 Digital Clocks
<b>Model</b>	4-digit, red or green 7-segment LED	6-digit, red or green 7-segment LED
<b>Dimensions</b>	Length: 12" (30 cm)	Length: 17.5" (44 cm)
	Height: 6" (15 cm)	Height: 6" (15 cm)
	Depth: 2.28" (5.8 cm)	Depth: 2.28" (5.8 cm)
<b>Cabinets</b>	Materials: plastic, aluminum or brushed stainless steel	Materials: aluminum or brushed stainless steel
	Plastic colors: black, putty or off-white	Colors: black, brushed stainless steel
<b>Weights</b>	Aluminum cabinet: 2.2 lb. (1 kg)	Aluminum cabinet: 3.25 lb. (1.47 kg)
	Plastic cabinet: 1.6 lb. (0.7 kg)	
	Stainless cabinet: 4.1 lb. (1.85 kg)	Stainless cabinet: 5.6 lb. (2.3 kg)
<b>Viewing distance</b>	150+ feet (50+ meters)	150+ feet (50+ meters)
<b>Accuracy</b>	± approximately 200 milliseconds	± approximately 200 milliseconds
<b>Power consumption</b>	8 watts	9.5 watts
<b>Operating temperature</b>	32–104° F (0–40° C)	32–104° F (0–40° C)
<b>Operating humidity</b>	95% maximum, non-condensing	95% maximum, non-condensing
<b>Note:</b> specifications and design are subject to change without notice.		

## Technical Data

### Applicable Standards

#### American National Safety Institute (ANSI)/Underwriters Laboratories (UL)

ANSI/UL 60950-1, CAN/C22.2—Information Technology Equipment—Safety Standard

#### Institute of Electrical and Electronics Engineers (IEEE)

IEEE 802.3af-2003—Standard for Information Technology—Telecommunications and Information Exchange Between Systems—Local and Metropolitan Area Networks—Specific Requirements  
IEEE 802.3at (PoE+)—2009—updated Information Technology Standard

#### Other Certifications/Standards

RoHS compliant, ETL listed and CE marked

## Installation

Refer to *Novanex PoE Clock Installation and User Guide* included with shipment; also available at: <http://support.novanexsolutions.com>

## Availability and Cost

## Warranty

Novanex warranties all products for a period of three years from date of manufacture.

## Maintenance

Novanex PoE clocks are powered directly from the network. Maintenance consists of periodic physical and visual checks on clocks and verification of the clocks' network configuration (a clock monitoring and alerting system is available). Surfaces can be cleaned with mild detergent. Contact Novanex for literature describing resistance qualities with other cleaning agents.

## Technical Services

Contact Novanex for installation and user guides.

## Support

Kontakta Direktronik AB 08-52400700  
info@direktronik.se

## Mounting Options

### Surface Mounting

All Novanex clocks have two keyhole slots on the rear of the clock for surface mounting. The clock back includes a recessed area for placement over an Ethernet receptacle or simple attachment of an Ethernet cable to the clock cabinet.



### Cantilever (wall) mounting

Both 4 and 6 digit ONTXDS models include the ONTXKIT-W, a powder coated black steel wall mounting bracket, and two each of the specified clock variations. The clocks mount on the wall bracket snugly, back to back, without any visible space between them. The wall bracket should be attached to a standard square metal outlet box to provide the supporting strength required.

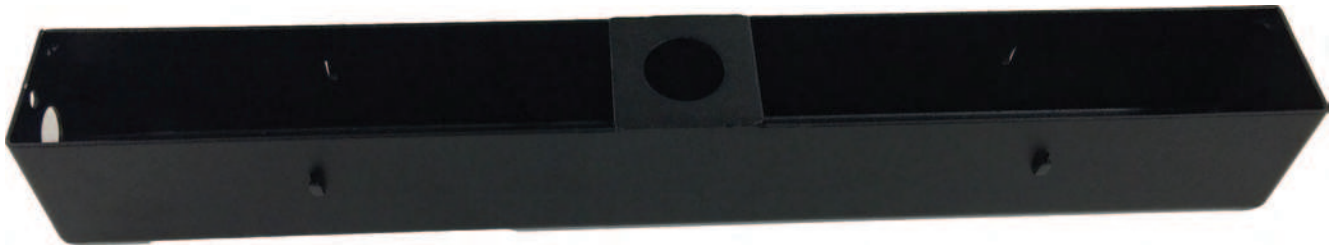


ONTXKIT-W

The ONTXKIT-W and ONTXKIT-W can also be ordered separately

### 4 and 6 digit suspended ceiling mount

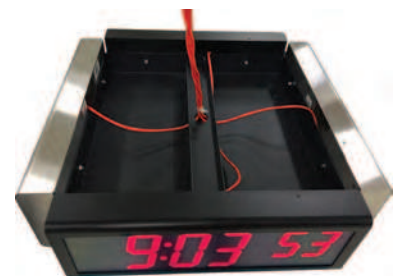
Four and six digit models can be ordered with a pendant mount (ONTXKIT) to facilitate two clocks mounted back to back and suspended from the ceiling. Due to the variations in ceiling types and suspension techniques the ONTXKIT requires a customer supplied conduit and bracket.



### 6 digit quad mount

Six digit models can be ordered with a quad pendant mount (ONT6QUAD) to facilitate four 6 digit clocks mounting in a square and suspended from the ceiling. Due to the variations in ceiling types and suspension techniques the ONT6QUAD requires a customer supplied conduit and bracket.

Shown with 2 each ONT6BK and 2 each ONT6SS attached



ONT4OW-P-G installed in ONT4NEMA  
(surface mounted only)



shown ONT4BKFM  
recess mounted model