

# DIREKTRONIK

## Quick Start Guide

### Content

- PiKVM v3.3 Pre-Assembled
- ATX adapter board with motherboard interface wiring
- A 32 GB MicroSD card pre-imaged

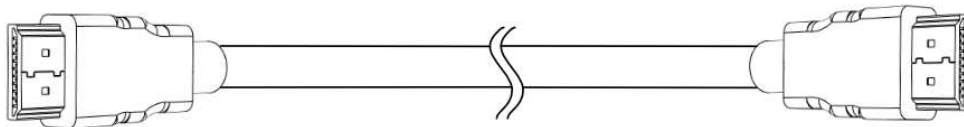
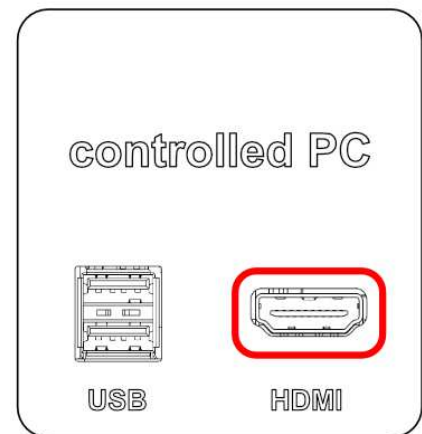
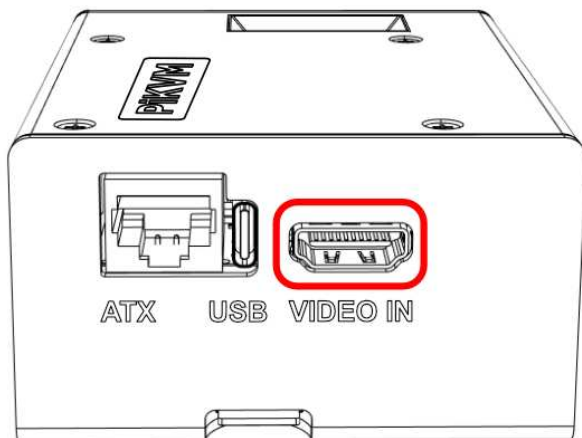
### What you will need

To use PiKVM v3 PA, the following accessories will be required:

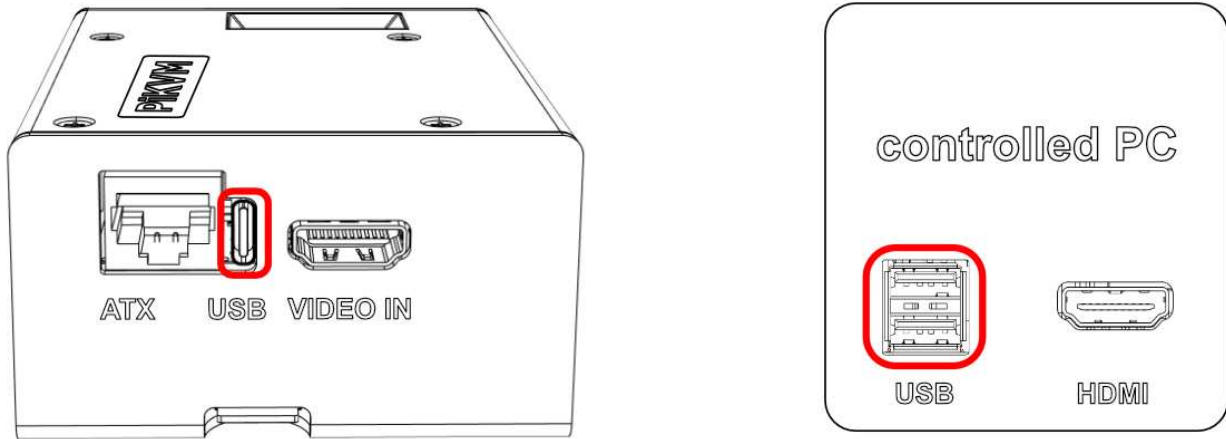
- A 5.1v 3A power supply with USB-C
- A cable or adapter to connect the video output of your controlled device to PiKVM's HDMI input
- A USB-C to USB-A or USB-C cable with DATA lines for keyboard and mouse emulation
- An Ethernet cable for network connectivity

### Hardware connections

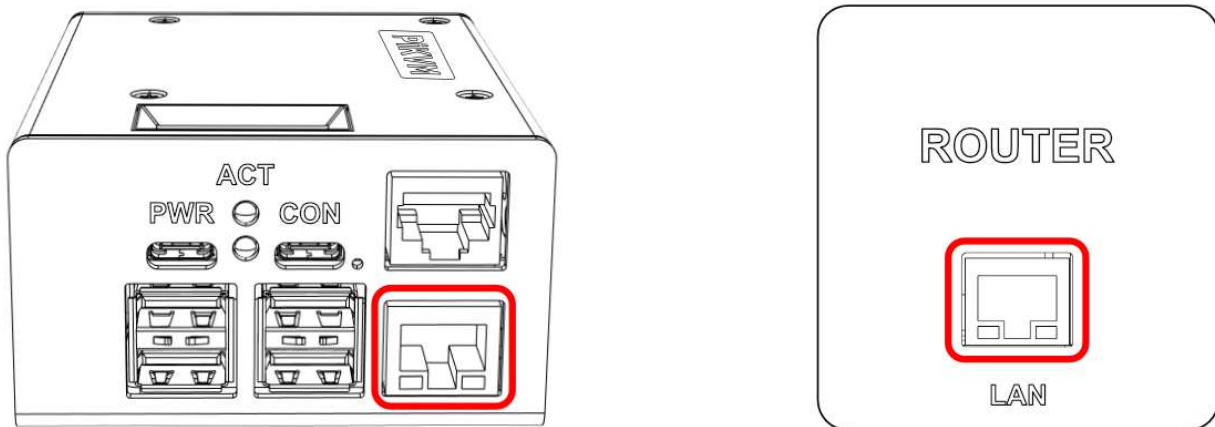
1. **Connect HDMI to the PiKVM and the other end to the controlled device**



2. **Connect USB-C to PiKVM and the other end to the controlled device (USB-A or USB-C as needed)**



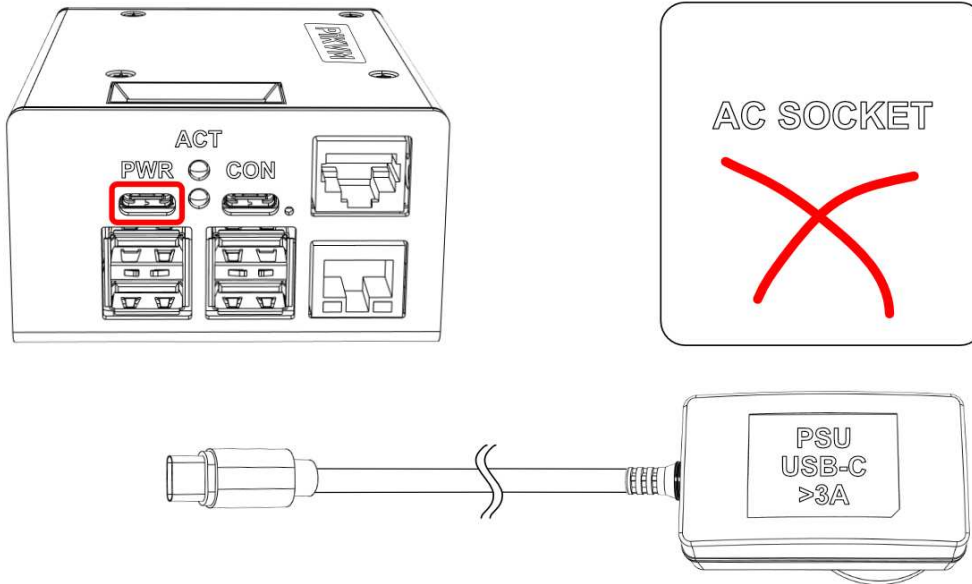
3. **Connect to your local network** by connecting an Ethernet cable to the PiKVM's Ethernet port and connect the other end to your network router or switch.



## Powering up

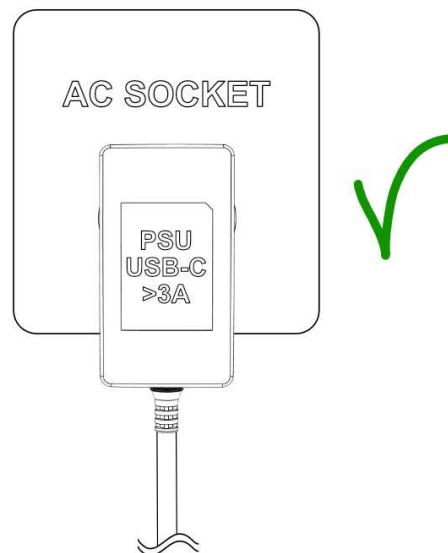
### 4. Plug power into PiKVM

Connect the USB-C cable from the power adaptor to the USB-C port labeled "PWR" on the PiKVM.



### 5. Plug the power adapter to the wall

Connect the AC to USB-C power adaptor to a power outlet.

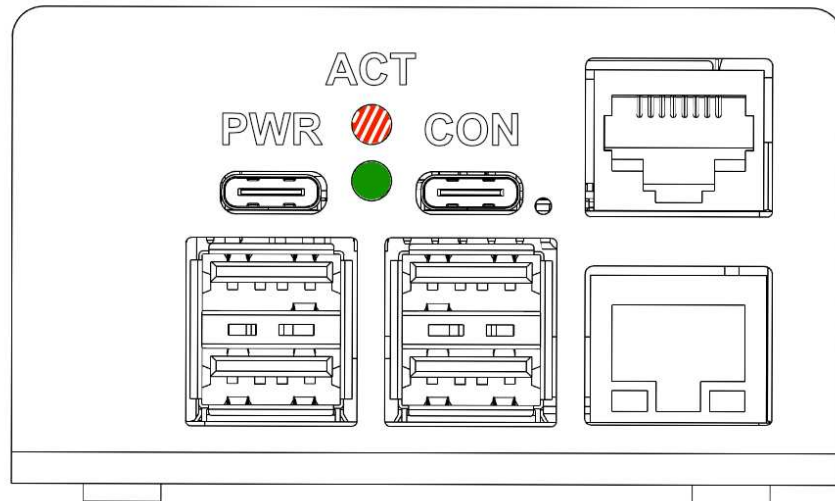


## You are done!

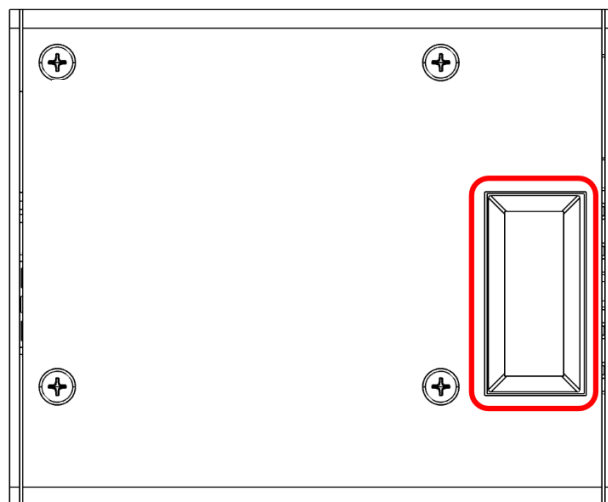
If everything is connected correctly, you should see the following:

The GREEN LED should shine a solid green.

The ACT LED will flash red intermittently as the device runs.



When powered on and booted, the OLED will show various information (like IP address, uptime, etc.)

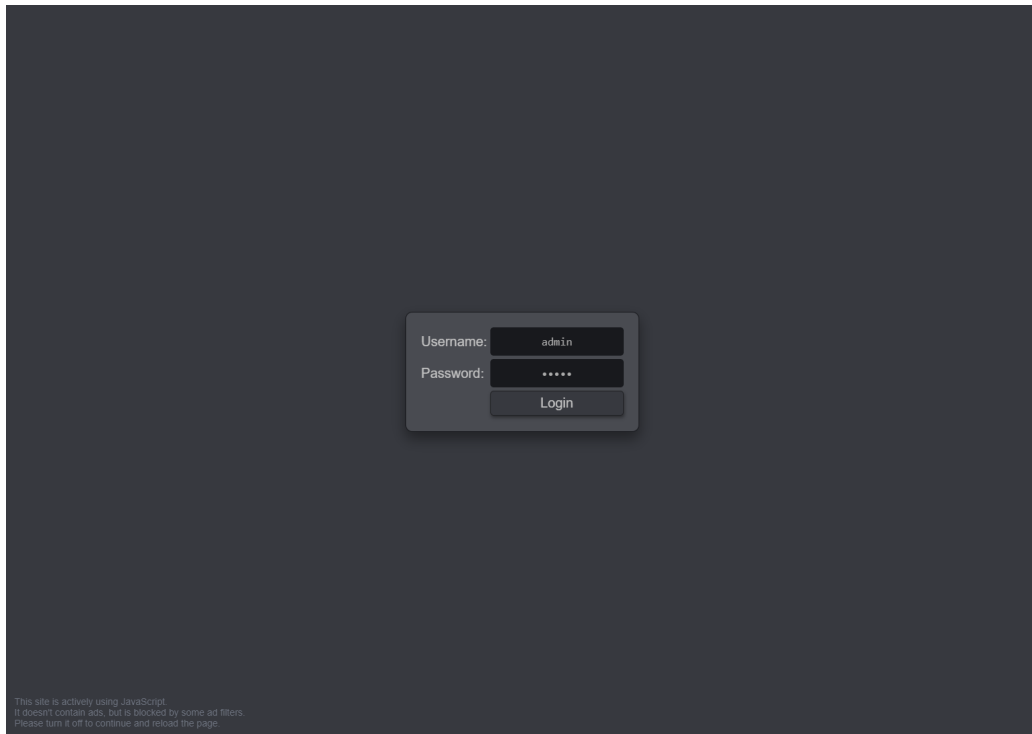


**DIREKTRONIK**

Direktronik AB tel. 08-52 400 700 [www.direktronik.se](http://www.direktronik.se)

## Logon

Open a browser and enter your IP address. You should see this screen:



Type default access credentials (**admin/admin**).

We highly recommend you change them, see the full guide linked below!

# **DIREKTRONIK**

Direktronik AB tel. 08-52 400 700 [www.direktronik.se](http://www.direktronik.se)