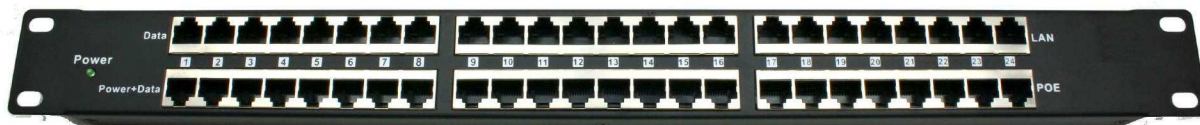


24-portars PoE midspan-injektorer



- 24 Port 10 / 100 Ethernet Injector
 - 24 Shielded RJ-45 LAN
 - 24 Shielded RJ-45 LAN+POE
 - 2 data pairs active for 10/100 data rates (12,36 passthru)
 - 2 inactive pairs used for power (45 + and 78 -)
- 1U high standard rack mount (1.75 x 19 x 1 inches)
- 650 ma automatic resettable fuse on each port
- power is equally shared as needed by the devices
- Use with any Ethernet switch – passes all management info transparently
- Master power **GREEN** LED
- Ideal for IP Cameras, VOIP phone, WiFi Access Points with 802.3af or 802.3at or passive
- Power supply range 12 to 56 volts Dual Power supply inputs, isolated from each other via a diode bridge



secondary wired DC input with ground



2.1mm DC input

- we offer kits with power supplies
- Environmental
 - operating temperature range – 0 to 70 deg C
 - storage temperature range – 0 to 70 deg C
 - relative humidity range – 5 to 90% non condensing
 - FCC rules – there are no RF emitting devices in the design
 - the device is PELV per NFPA standard 79 – protected extra low voltage
 - no cooling is required, no fans. Quiet operation with no moving parts

Usage	Voltage input to use	Average power per port	Note
802.3af (passive) two supplies	48 volts	10 watts	For WiFi Access Points and cameras
802.3af (passive) one supply	48 volts	5 watts	For IP phones
Passive 24v	24 volts	5 or 10 watts	For Mikrotik, UBNT, OpenMesh, Tranzeeo