

Gigabit PoE Injector

SPECIFICATION

1. INPUT :

- 1.1 Input Voltage: 9Vdc to 36Vdc
- 1.2 Input Current: 1.85A at 12Vdc
0.90A at 24Vdc

2. OUTPUT :

2.1 Output Voltage & Current:

| | |
|-------------|-------|
| OUTPUT | +48V |
| Max. load | 0.35A |
| Power | 17W |
| Min. Load | 0.01A |
| Load reg. % | 5% |
| Line reg. % | 1% |
| Ripple % | 1% |
| Noise % | 1% |

TOTAL POWER :17W

Note 1: Noise bandwidth is from DC to 20Mhz. Ripple & Noise is measured by Paralleling a 0.1uF metalize capacitor on the test point.

3. EFFICIENCY : 75% min at Full Load , 12Vdc & 24Vdc Input Voltage

4. PROTECTION

4.1 Short Circuit Protection

Output Short GND Terminal will not damage the Power Supply and will Auto-Reset.

4.2 Input with Fuse Protection.

4.3 Safety Standard: meet UL1950, CSA 22.2 & TUV EN60950.

4.4 EMC : meet FCC Class B , EN55022 Class B, EN60945, EN50155

4.5 Over Current : 120% ~ 160% @12Vdc Input F.L

4.6 Dual Input Pin & Reverse Protection-----NO Work

5. GENERAL DESCRIPTION

5.1 Operation Temperature: - 25C - +75C

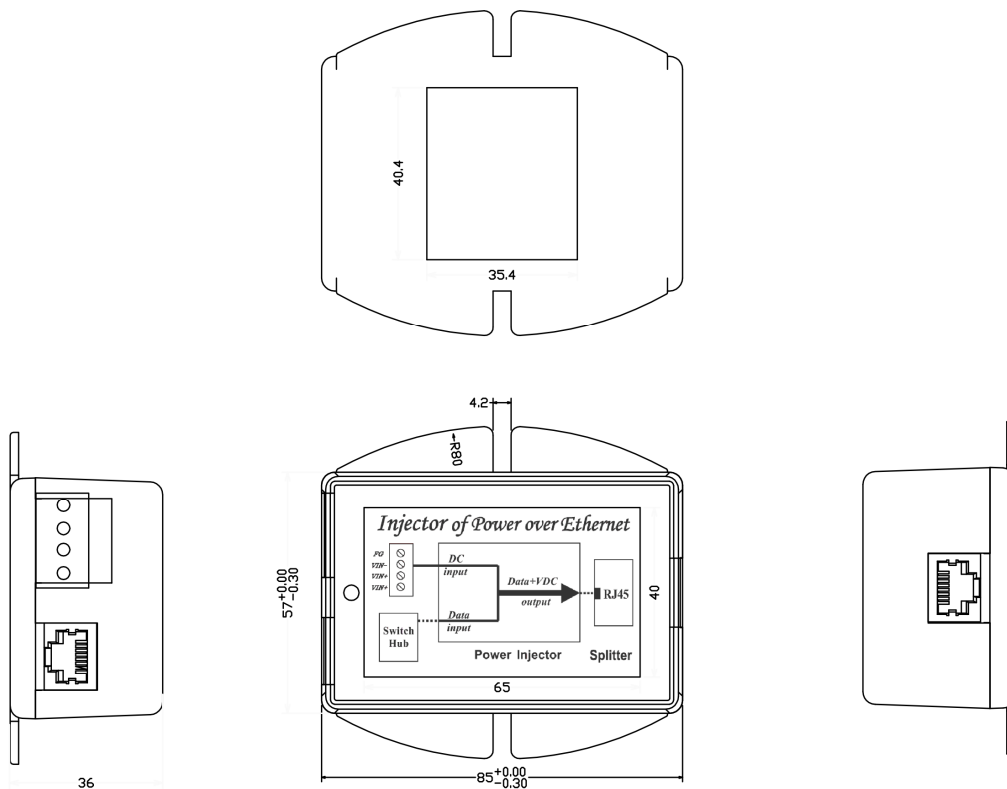
5.2 Storage Temperature: -40C - +85C

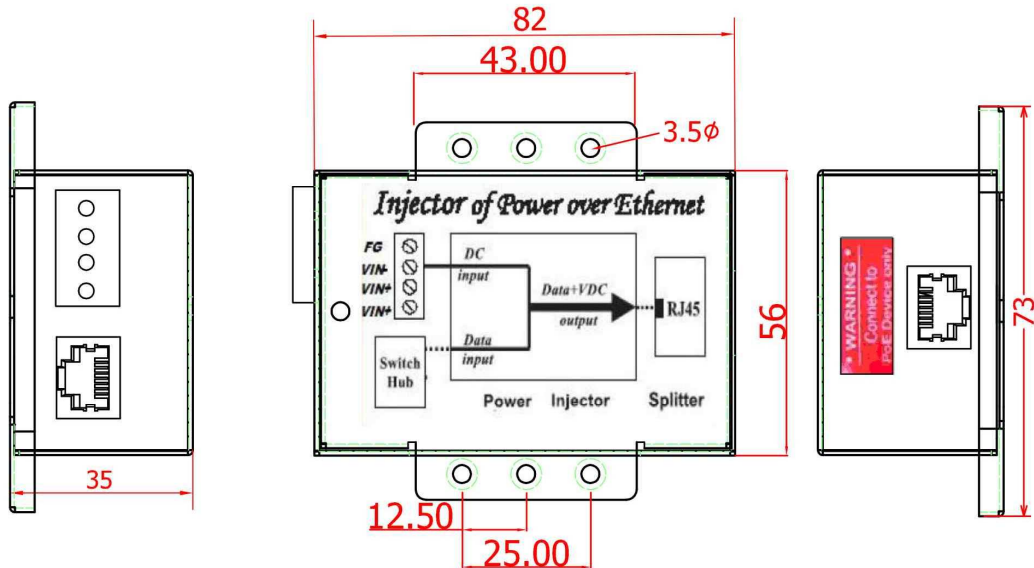
5.3 Operation Humidity: 5% - 90%

5.4 Cooling: Free air cooling

5.5 Dimensions: Plastic case 85*57*36 (L)*(W)*(H)

Metal case 82*56*35 (L)*(W)*(H)





6. Indicator :

6.1 Output Ready the LED will be "RED"

6.2 Output 802.3af OK the LED will be "GREEN"

7. RJ45 Connected and pin out: @1000MBASE

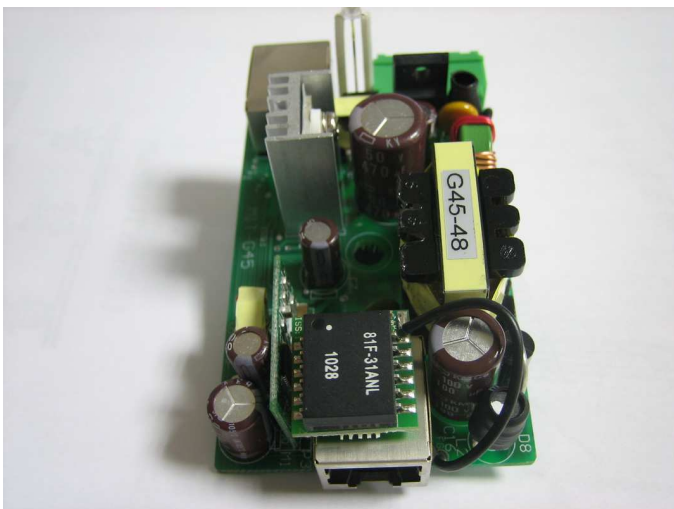
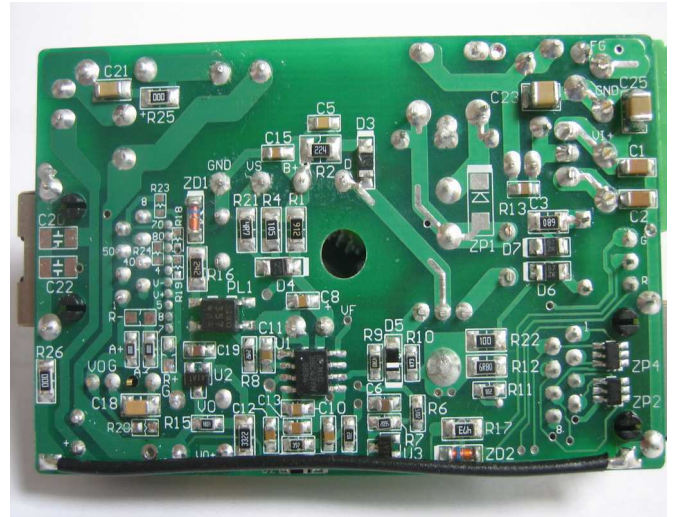
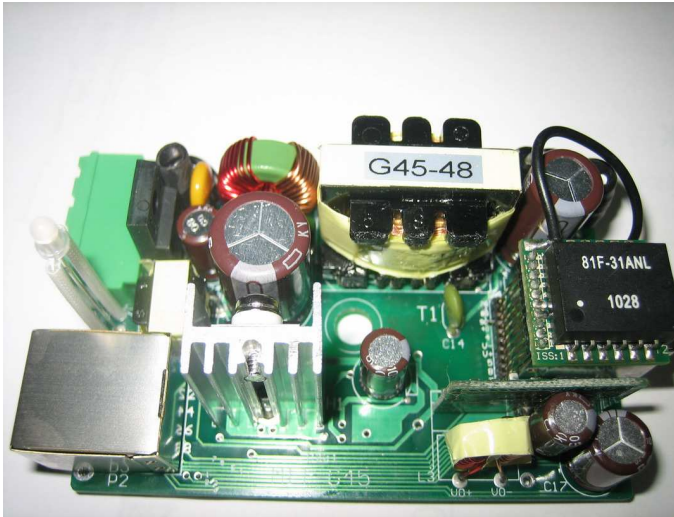
| RJ-45 Input (Data Only) | | | RJ-45 Output (Data & Power) | |
|-------------------------|--------|--------------|-----------------------------|-----------------------|
| Pin | Symbol | Description | Symbol | Description |
| 1 | BI_DA+ | Data Pair A+ | BI_DA+ | Data Pair A+ |
| 2 | BI_DA- | Data Pair A- | BI_DA- | Data Pair A- |
| 3 | BI_DB+ | Data Pair B+ | BI_DB+ | Data Pair B+ |
| 4 | BI_DC+ | Data Pair C+ | +Vdc + BI_DC+ | power(+)+Data Pair C+ |
| 5 | BI_DC- | Data Pair C- | +Vdc + BI_DC- | power(+)+Data Pair C- |
| 6 | BI_DB- | Data Pair B- | BI_DB- | Data Pair B- |
| 7 | BI_DD+ | Data Pair D+ | -Vdc + BI_DD+ | power(-)+Data Pair D+ |
| 8 | BI_DD- | Data Pair D- | -Vdc + BI_DD- | power(-)+Data Pair D- |

Note :

1. DC output gnd and Vin+/- should not be shorted to ground(FG).

DIREKTRONIK

Dataprodukter utöver det vanliga



DIREKTRONIK

Direktronik AB tel. 08-52 400 700 www.direktronik.se