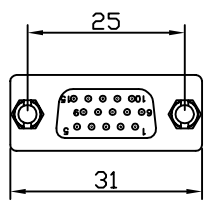
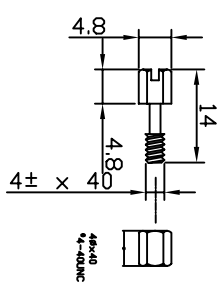
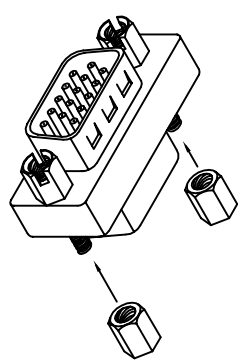
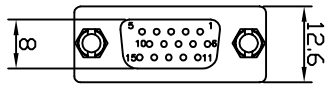
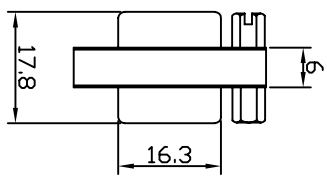


Low Profile HD15 MALE



Low Profile HD15 FEMALE



Specification:

- Shell: Steel, Tin plated.
- Pin contact: Phosphor with gold plated over nickle.
- Insulator: PBT & Fiber reinforced 94V0.
- Current Rating: 5 AMP.
- Dielectric Strength: 1000V for one minute.
- Insulator resistance: 1000M ohm min at 500V DC.
- Temperature: -55 to 105 degree.

12-12-9

Low

F-362

14-2189