



All-in-One Outdoor PoE Switch with Plug and Play Installation

Surge protection up to 12KV per port/AC power up to 40KV

Waterproof IP67 & Vandal proof IK10 rated housing

Wide operating temperature

AC/DC dual input power

All-in-One Solution

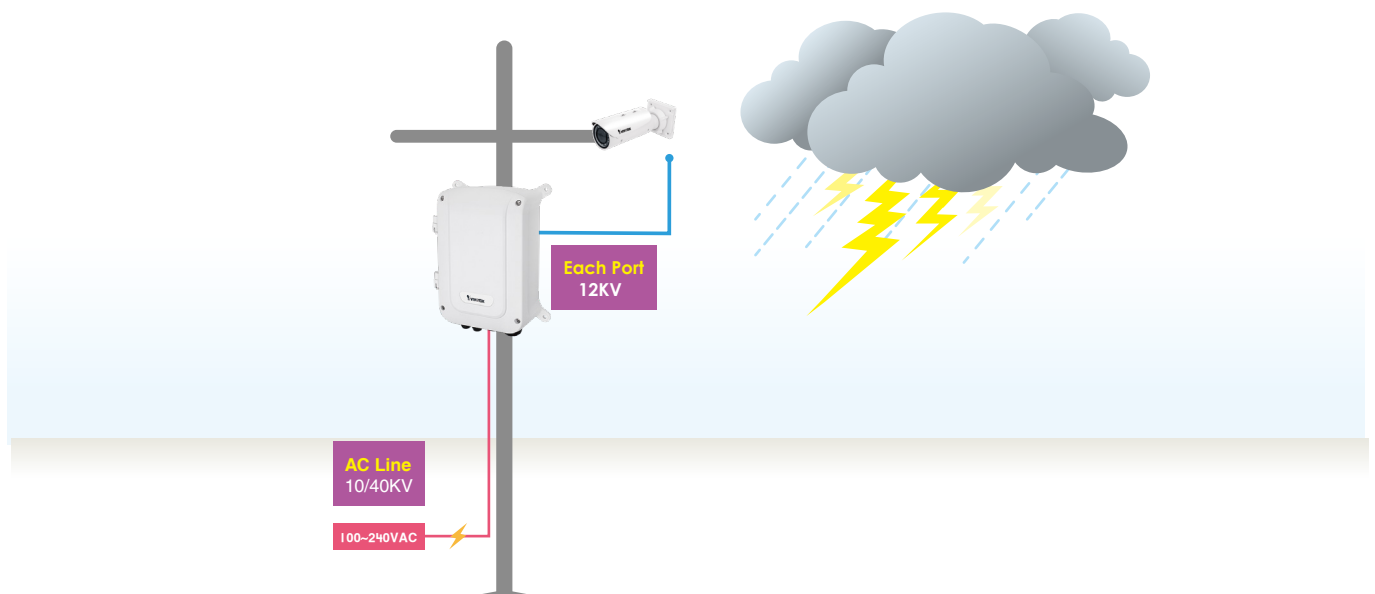
VIVOTEK's outdoor PoE switch already installs switch and power so users can save the extra labor cost and time and further decrease the maintenance and RMA cost than before. The solution also supports IP67, IK10 and wide operating temperature, which may not support in traditional solution. The All-in-One solution will be the ideal choice for any outdoor applications.



Lightning Surge Protection

VIVOTEK's outdoor PoE switch has IP67 and IK10 rated chassis for outdoor environment, also has the power surge protection for lightning strike or unexpected power surge.

Lightning Surge Protection



Outdoor Fast Ethernet EXPoE Switch



Ethernet Surge Protection



AC Power Surge Protection



PoE Range @200m



IP67



IK10



-40°C~60°C



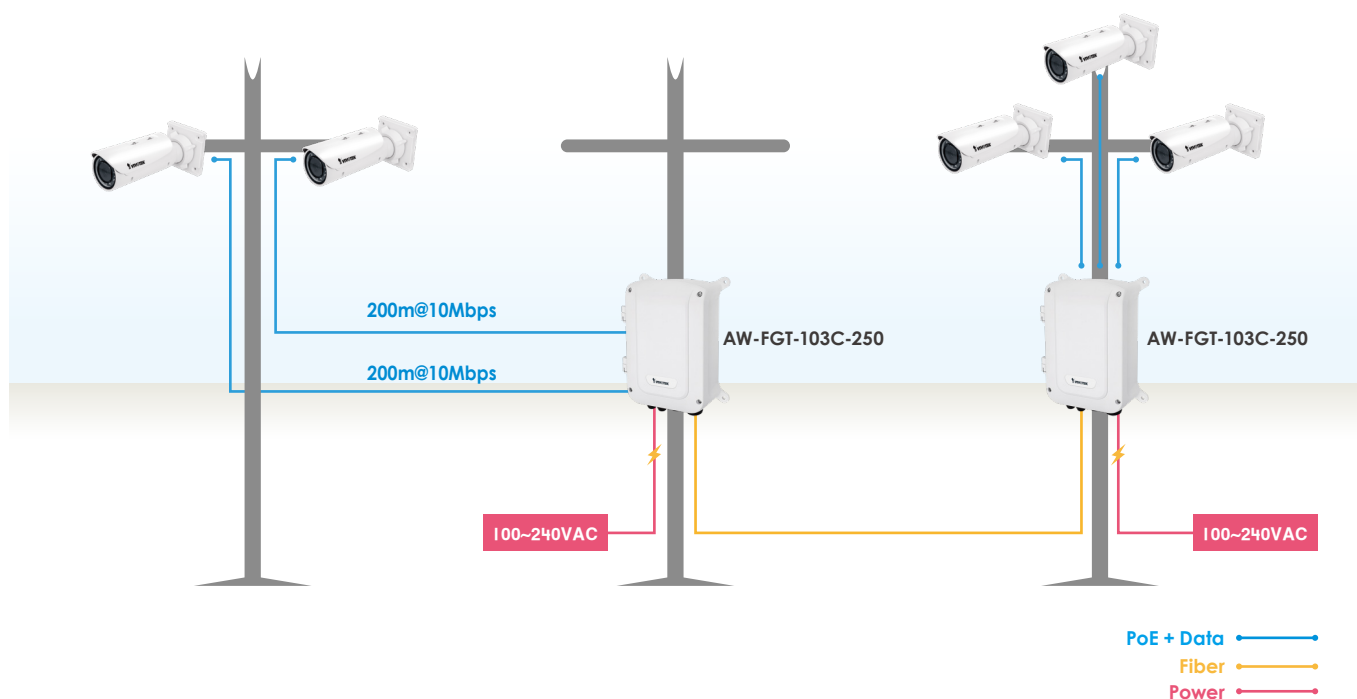
30W PoE



Plug & Play

- 12KV PoE surge protection
- 10KV/40KV AC power surge protection
- 30% range of input voltage tolerance
- Circuit protection prevents power interference
- EX mode "off" reaches PoE camera up to 100m@100Mbps
- EX mode "on" reaches 802.3at camera up to 200m@10Mbps
- AC/DC dual input power

EXtend Mode



H/W Matrix Table

	AW-FET-053C-120	AW-FGT-103C-250
Total Fast Ethernet Ports	5	8
Total Gigabit Ports	-	2
PoE Port@EX Mode OFF	4x30W PoE ports	8x30W PoE ports
PoE Port@EX Mode ON	2x30W EXPoE + 2x30W PoE ports	2x30W EXPoE + 6x30W PoE ports
Fast Ethernet Ports (RJ45)	1	-
Gigabit RJ45/SFP Combo Ports	-	2
PoE Surge Protection	12KV	12KV
Power Surge Protection	10KV	40KV
Power Budget	120W	240W
Weather Rating	IP67	IP67
Vandal Proof	IK10	IK10
Operating Temperature	-40°C ~ 60°C (-40°F ~ 140°F)	-40°C ~ 60°C (-40°F ~ 140°F)
AC/DC Dual Input Power	AC 100V~240V / DC 48V~56V	AC 100V~240V / DC 48V~56V

Outdoor Gigabit Ethernet Unmanaged PoE Switch



Ethernet Surge Protection



AC Power Surge Protection



IP67



IK10



-40°C~65°C



30/60W PoE

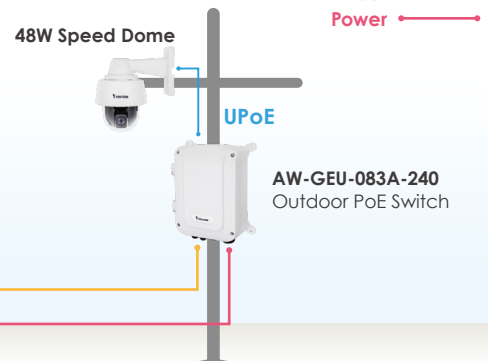
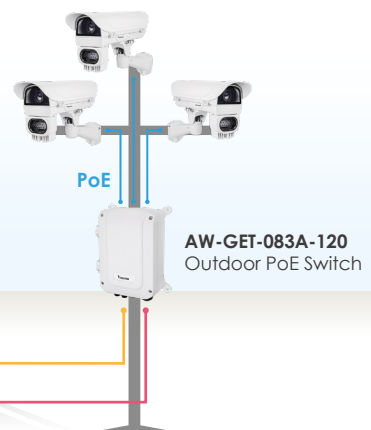


Full Ports Gigabit



Fiber-Optical

- IP67/IK10 cast aluminum housing
- 30W per port IEEE802.3at compliant
- 60W per port UPoE (AW-GEU-083A-240 only)
- Supports 10/100/1000Mbps data rates
- Flexible SFP transceiver ports for uplink
- AC/DC dual input power



H/W Matrix Table

	AW-GET-083A-120	AW-GEU-083A-240	AW-GET-123A-240
Total GbE Port	8	8	12
GbE PoE Port	4x30W	4x60W	8x30W
SFP slot (100M/1GbE)	2	2	4
GbE Port (RJ45)	2	2	-
PoE Surge Protection	6KV	6KV	6KV
Power Surge Protection	40KV	40KV	40KV
Power Budget	120W	240W	240W
Weather Rating	IP67	IP67	IP67
Vandal Proof	IK10	IK10	IK10
Operating Temperature	-40°C ~ 65°C (-40°F ~ 149°F)	-40°C ~ 65°C (-40°F ~ 149°F)	-40°C ~ 65°C (-40°F ~ 149°F)
AC/DC Dual Input Power	AC 100V~240V / DC 48V~56V	AC 100V~240V / DC 48V~56V	AC 100V~240V / DC 48V~56V

Outdoor VivoCam L2+ Managed PoE Switch

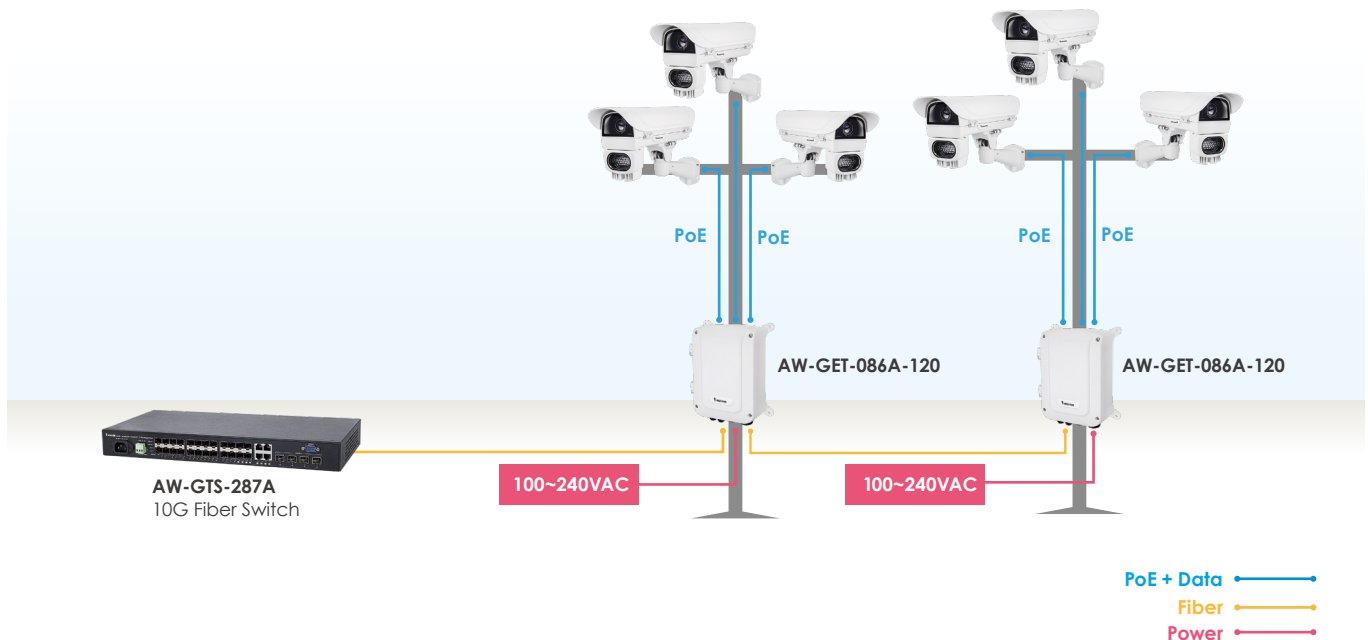


Surveillance Features:

- Automatic discovery for IP cameras
- Generate network topology automatically
- Graphic grouping VLAN
- Cable diagnostic & reboot camera remotely
- Topology view/Floor view/Google map
- Monitor/Configure/Manage IP camera remotely
- PoE ON/OFF scheduling
- PoE auto checking
- ONVIF IP camera compatible

Layer 2 Plus Features:

- IPv4/IPv6 protocol
- IPv4/IPv6 L3 static route
- 802.1d (STP), 802.1w (RSTP), 802.1s (MSTP)
- SNMP v1/v2c/v3
- Port-based & Tag-based VLAN
- LACP and Static link aggregation
- IGMP snooping
- DHCP server

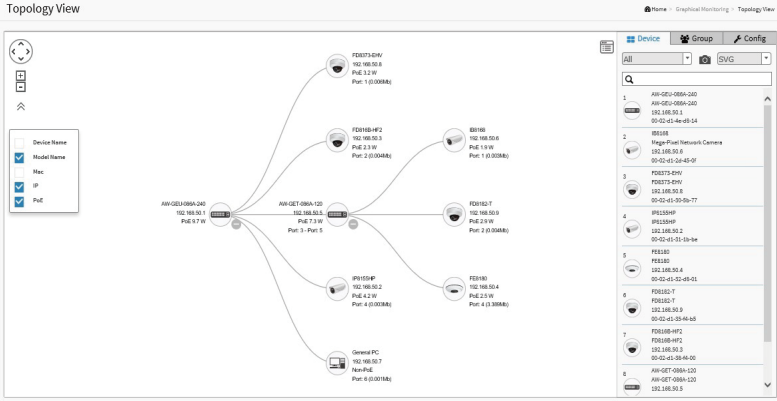


H/W Matrix Table

	AW-GET-086A-120	AW-GEU-086A-240	AW-GET-126A-240
Total GbE Port	8	8	12
GbE PoE Port	4x30W	4x60W	8x30W
SFP slot (100M/1GbE)	2	2	4
GbE Port (RJ45)	2	2	-
PoE Surge Protection	6KV	6KV	6KV
Power Surge Protection	40KV	40KV	40KV
Power Budget	120W	240W	240W
Weather Rating	IP67	IP67	IP67
Vandal Proof	IK10	IK10	IK10
Operating Temperature	-40°C~ 65°C (-40°F~ 149°F)	-40°C~ 65°C (-40°F~ 149°F)	-40°C~ 65°C (-40°F~ 149°F)
AC/DC Dual Input Power	AC 100V~240V / DC 48V~56V	AC 100V~240V / DC 48V~56V	AC 100V~240V / DC 48V~56V

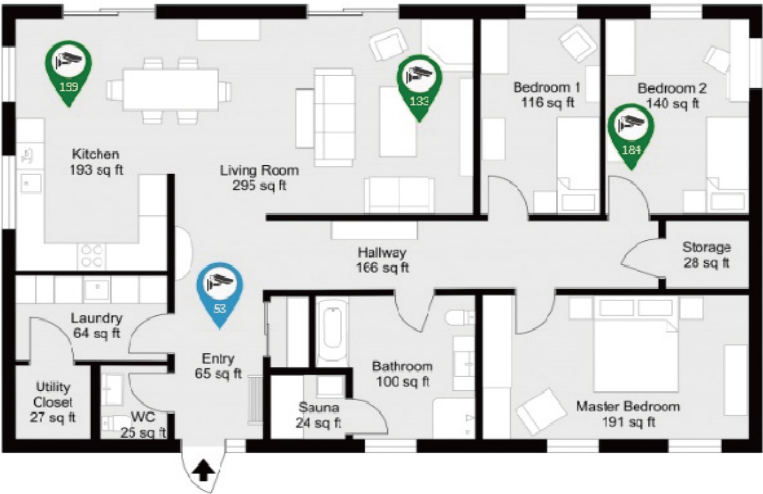
Feature Highlight - Managing IP Surveillance

Topology View



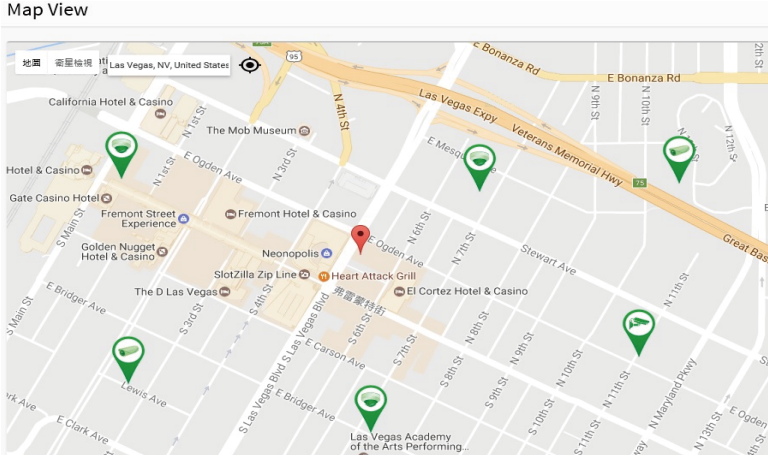
Auto-generated Topology View allows administrators to quickly view and export a complete network topology in SVG/PNG/PDF format for easier inspection and planning.

Floor View



Upload custom floor images. Floor View allows for quick location of deployed surveillance devices and for export of this view in SVG/PNG/PDF format for easier inspection and planning.

Google Map View



Locate surveillance devices on Google map to simplify multi-site management of any large scale deployments.

VIVOTEK IP Camera Controller

Device List

Devices List Home > Management > Device List

Auto-refresh

Show entries Search:

<input type="checkbox"/> Remove	Status	Device Type	Model Name	Device Name	MAC	IP Address
<input type="checkbox"/>	Online	SWITCH	AW-GEU-086A-240	AW-GEU-086A-240	00-02-D1-4E-D8-14	192.168.50.1
<input type="checkbox"/>	Online	IP Camera	IP8155HP	IP8155HP	00-02-D1-31-1B-BE	192.168.50.2
<input type="checkbox"/>	Online	IP Camera	FD816B-HF2	FD816B-HF2	00-02-D1-38-F4-00	192.168.50.3
<input type="checkbox"/>	Online	IP Camera	FE8180	FE8180	00-02-D1-32-D8-01	192.168.50.4
<input type="checkbox"/>	Online	SWITCH	AW-GET-086A-120	AW-GET-086A-120	00-02-D1-4E-DD-28	192.168.50.5
<input type="checkbox"/>	Online	IP Camera	IB8168	IB8168	00-02-D1-2D-45-0F	192.168.50.6
<input type="checkbox"/>	Online	PC	General PC	PM-MING-HSIEH	54-A0-50-8E-C0-22	192.168.50.7
<input type="checkbox"/>	Online	IP Camera	FD8373-EHV	FD8373-EHV	00-02-D1-30-5B-77	192.168.50.8
<input type="checkbox"/>	Online	IP Camera	FD8182-T	FD8182-T	00-02-D1-35-F4-B5	192.168.50.9

Showing 1 to 9 of 9 entries Previous **1** Next

Camera Dashboard

IP9171-HP ×

Device Type

Device Name

Model Name IP9171-HP

Mac Address 00-02-d1-68-a4-c4

IP Address 192.168.4.117

Http Port

PoE Used 4.6 W

firmware Version 0103g

Login

Diagnostics

Live Stream

Management

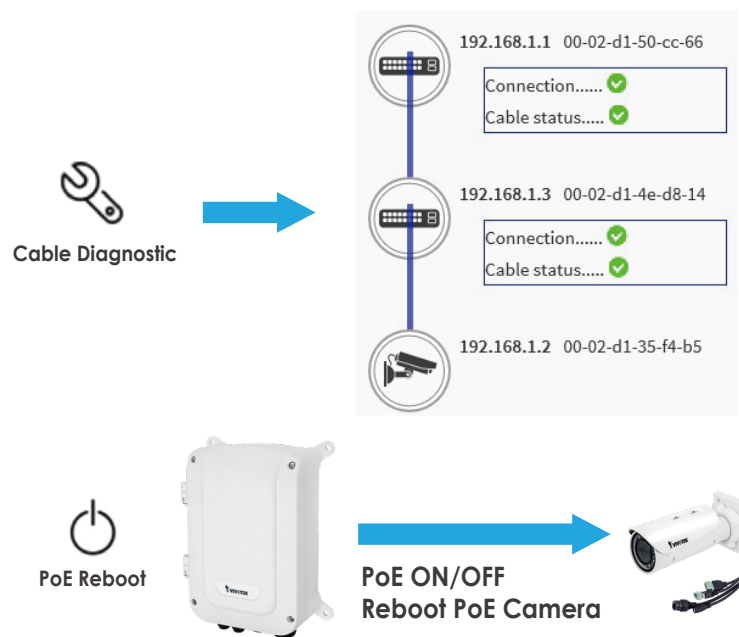
Default

PoE Reboot

Dashboard

Notification

Monitor



Ordering Information

All-in-One Outdoor FE Unmanaged PoE Switch		
	Model	Description
	AW-FET-053C-120	4xFE PoE + 1xFE Unmanaged PoE Switch, IP67, IK10, -40°C~60°C
	AW-FGT-103C-250	8xFE PoE + 2xGE Combo Unmanaged PoE Switch, IP67, IK10, -40°C~60°C
All-in-One Outdoor GE Unmanaged PoE Switch		
	AW-GET-083A-120	4xGE PoE + 2xGE UTP + 2xGE SFP Unmanaged PoE Switch, IP67, IK10, -40°C~65°C
	AW-GEU-083A-240	4xGE UPoE(60W) + 2xGE UTP + 2xGE SFP Unmanaged PoE Switch, IP67, IK10, -40°C~65°C
	AW-GET-1263-240	8xGE PoE + 4xGE SFP Unmanaged PoE Switch, IP67, IK10, -40°C~65°C
All-in-One Outdoor VivoCam L2+ Managed PoE Switch		
	AW-GET-086A-120	4xGE PoE + 2xGE UTP + 2xGE SFP L2+ Managed PoE Switch, IP67, IK10, -40°C~65°C
	AW-GEU-086A-240	4xGE UPoE(60W) + 2xGE UTP + 2xGE SFP L2+ Managed PoE Switch, IP67, IK10, -40°C~65°C
	AW-GET-126A-240	8xGE PoE + 4xGE SFP L2+ Managed PoE Switch, IP67, IK10, -40°C~65°C

All specifications are subject to change without notice.
© VIVOTEK INC. All rights reserved. Ver. 1

VIVOTEK INC.

6F, No.192, Lien-Cheng Rd., Chung-Ho, New Taipei City, 23553 Taiwan | T: +886 2 8245 5282 | F: +886 2 8245 5532 | E: sales@vivotek.com